

HIGH TECH **TO** HARD TECH

 **BOSCH**  **ROBINAIR**  **OTC** *The most advanced diagnostics, tools & equipment*



The All-New ADS 10X Plus

Built on Trust, Powered by Bosch

- Designed in North America, for North America
- Trusted & Licensed OEM Repair Data
- Scan to Solution in Seconds
- Built for What's Next

More on page 2



The Right Fit for Your Robinair: Genuine Parts & Accessories

More on page 6

Up to \$250 back!

Check BoschRebates.com for end-user rebates on select OTC equipment



OTCTR2010 CALL
OTCTR2016 CALL

20-Ton Truck Ramps

- Support semi-trucks, tractor-trailers, and other HD vehicles
- Mid-body wheels for easy positioning



OTCS012 \$980.95

12-Ton Capacity Jack Stands (Pair)

- Extra-large base for solid ground contact, secure vehicle holding
- 17-1/2" To 27-1/2" holding range



OTC1750A CALL

6,000-lb Heavy-Duty Stand

- 96:1 gear ratio rotates heavy-duty components 360-degrees
- 40+ adapter plates for most heavy-duty engines, transmissions and more



OTC1585A CALL

1,250-LB Capacity Powertrain Lift

- Ideal size/capacity for engine and transaxle service
- Tilting plate with 4-way adjustment for easier remove, installation of components

Prices are in Canadian dollars.

The All-New ADS 10X Plus

Driven by 35+ years of Bosch Diagnostic expertise



Reengineered from the inside out by the people who design the systems you diagnose.

Faster scans, improved connectivity: Scan speeds up to 24x faster, improved wireless connectivity, more storage, bigger screen, and lightweight design.

New wireless, future-proof J2534-compliant GVCi: Supports DoIP, and CAN FD protocols without the need for adapter cables.

Access to the Bosch Wiring Diagram Database with over 700,000 wiring diagrams for all US domestic & import cars, light trucks, and vans for 1985-2026 model years.*

98% coverage: Broad coverage across domestic, European, and Asian makes—plus EVs and ADAS-equipped models.

M Integrated MOTOR TruSpeed Repair with access on-tool + desktop. Provides OEM repair data from major OEMs including Ford, GM, Honda, Toyota, VW, and more.*

Seamless solutions to unlock Secure Gateway modules for FCA/ Stellantis, Nissan, Hyundai, Kia, Genesis, Ford/Lincoln, Honda/Acura, Subaru, Porsche, and Volvo vehicles.**

One-tool efficiency: AutoID, DTC access, resets, relearns, and bi-directional tests – all in one platform.

Repair support built-in: Google Search, Identifix® Code-Assist, AllData®, and Mitchell® links streamline research and repair time.

Actionable reporting: Generate customizable pre- and post-scan reports with shop name, RO number, and full system status in seconds.

Smarter every month: Dedicated to monthly updates for the latest coverage, calibrations, secure access, and more.

Live data with visual insights: Graph multiple PIDs simultaneously and see ECU health with Topology View.

*30-day free trial of Enhanced subscription included, upgrade anytime.
**Secure access solution varies by OEM (directly in ADS X software, via AutoAuth, and more).

Coming Soon: The Complete Heavy Duty Diagnostic Solution for Repair Shops

BOS4824A CALL

ESI[truck] Heavy Duty Diagnostic Scan Tool

Truck, engine, and system coverage

- Portable, 11.6-inch tablet PC with full HD touchscreen, MIL-Spec rugged design, complies with IP66 rating, for everyday shop use
- Update to latest Windows 11 IoT Enterprise operating system. Faster processing: 4.6GHz Intel processor, 16GB of RAM, and 256 SSD HD
- Extensive make, model, engine, and system coverage for commercial vehicles / heavy duty trucks
- Scan and clear DTCs in engines, after treatment systems, transmissions, ABS, body control modules, HVAC, SAM modules, and more
- Perform calibrations, parameter settings, system checks, DPF regens and resets, cylinder cut-out tests, VGT calibrations, SCR tests and resets
- Optional Off-Highway License offers extensive coverage for construction vehicles, agricultural equipment, stationary engines, and more
- Access to troubleshooting and repair information included with 1st year of software including step-by-step diagnostic workflows for DTCs, component replacement guides, labor time guide, fuse box diagrams, sensor information and component locations, and TSBs
- Access to Bosch Technical Support included - no extra costs or subscriptions required



Over 65 specialty cables available for exclusive coverage of OHW vehicles



BOS3824CBL-UPG CALL

ESI[truck] Off-Highway Upgrade Cable Kit with Introductory Software License

Add off-highway vehicle and machinery coverage for multiple manufacturers to your 3824A ESI[truck] scan tool.

Kit Contents:

- 10 cables for machinery, construction equipment, agricultural vehicles and more
- ESI[truck] off-highway software package with full diagnostic capabilities. Introductory off-highway software expires when your ESI[truck] heavy duty truck software expires
- Software renewals can be done simultaneously, ensuring continuous HD truck and off-highway vehicle coverage

NEW

TPA 400 Tire Pressure Analyzer

Grow your aftermarket solution with complete TPA Sensor coverage



BOSTPA400 CALL

- Used for configuration of universal TPMS sensors
- Broad application, compatible with Bluetooth sensors, covers over 95% of OE sensors, programs over 20 brands of aftermarket sensors
- Coverage for passenger car & heavy duty truck TPMS systems
- Includes 3 years of free, wireless software & coverage updates
- Operation handled via the 2.8-inch color display and supported by step-by-step instructions for sensor programming and vehicle relearn procedures
- Integrated OBD-II module, perform relearn procedures directly on the vehicle
- Batch programming, configure multiple sensors in a single operation
- Includes OBD-II cable, charger and cable and soft carrying case



BOS3920 \$347.95

VET 100 Circuit Analysis Tool

Quickly Identify Electrical Issues in Failed Circuits

- Perfect tool for Data stream analysis using your scan tool
- Identify failed circuit component, wiring or PCM
- Simulates the sensor you are diagnosing by inputting a determined voltage at the sensor location
- Allows input voltage from .5VDC -7VDC in .5VDC increments
- Use your scan tool to verify if correct voltage is being applied to circuit
- Bypass sensor to send desired voltage back to PCM
- Works with 12V and 24V systems with vehicle voltage displayed. Also includes a "flashing" low battery voltage indicator



Other recommended product
OTC

OTC3990 \$496.45

OTC 1000V CAT III Hybrid Multimeter with Insulation Resistance Test

OTC 1000V CAT III Hybrid Multimeter with Insulation Resistance Test. A full function Multimeter with an insulation test feature is used to test for voltage leaks through insulation found on Hybrid and Electric Vehicles.

Features:

- Hybrid Insulation Resistance Test
- True RMS
- Auto Ranging
- Diode Test
- Continuity Buzzer
- Data Hold
- Data Logging
- Display Backlight
- Min/Max Mode
- Sleep Mode
- Low Battery Display



Scan the QR code to Watch the video to learn more about the **BAT 6120-US Battery Charger & Power Supply**.



BOSBAT6120-US CALL

BAT 6120-US 2-in-1 Battery Charger & Power Supply

High-Performance 12 V Battery Charger and 120 Amp Power Supply.

- Supports and maintains 120 A DC Continuous Output (@AC120 V~240 V, 25°C)
- Important for late model vehicles which have higher current requirements to maintain stable power supply during programming
- Supports Flooded/AGM/EFB/GEL/Lithium (LFP) batteries
- 12 V Lead Acid Battery Charge. Charging Diagnosis / 12 V Lithium Battery Charge, BMS Wake Up
- Maximum power output: up to 1750 W
- Flexible operation modes to fulfill customer needs
- Fits neatly on a desk, bench, or showroom floor. Also wall-mountable



BOS3926 \$227.45

BAT 35 Vehicle Computer Memory Saver

BAT 35 maintains the memory of the on-board vehicle computer to prevent losing memory settings when you disconnect a battery.

- Retain computer memory and on board memory sets such as: keyless entry codes, seat memory, digital radio settings, clocks, car alarms etc.
- Includes 12V, 7amp hour lead acid, sealed battery for long life expectancy
- Six LED indicator lights, three for charging functions and three for power storage conditions for ease of use
- Built-in OBD II cable for vehicle power supply while vehicle battery is disconnected



Scan the QR code to watch how the **BAT 155** helps diagnose a hard-starting medium-duty truck.



BOSBAT155 CALL

BAT 155 Heavy Duty Battery and Electrical System Tester

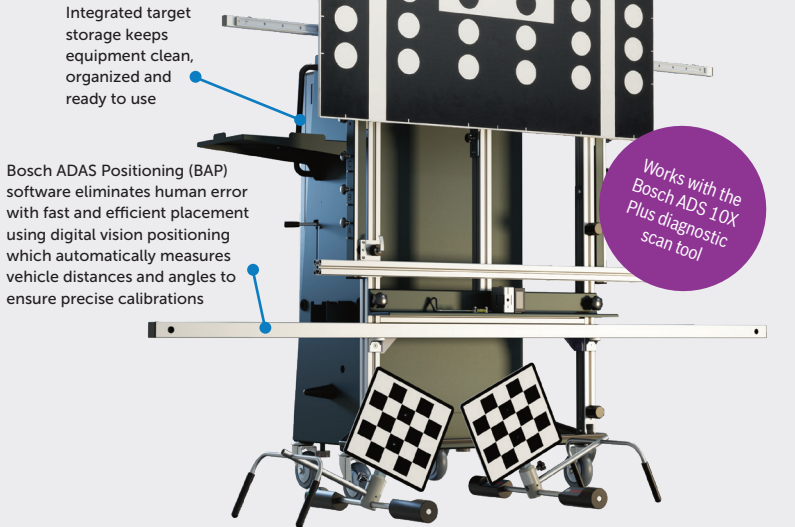
- 100 - 6,000 Cold Cranking Amp (CCA) Test Capacity
- Enables Testing Battery Packs (Multiple Batteries connected together) in the vehicle
- Infrared Temp Sensor for measuring battery temp (increases accuracy of CCA measurement)
- Optional Amp Probe and Voltmeter
- Tests 6V, 12V batteries and 12V, 24V charging systems

Prices are in Canadian dollars.

ADAS Calibration Solution

DAS 3000

A complete ADAS recalibration package that enables shops to quickly, easily and precisely recalibrate Advanced Driver Assistance Systems (ADAS)



Integrated target storage keeps equipment clean, organized and ready to use

Innovative multi-function camera + radar calibration board

Bosch ADAS Positioning (BAP) software eliminates human error with fast and efficient placement using digital vision positioning which automatically measures vehicle distances and angles to ensure precise calibrations

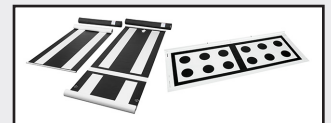
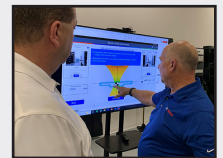
Works with the Bosch ADS 10X Plus diagnostic scan tool

BOSDAS 3000-3 CALL



Trust Bosch to bring your ADAS calibrations in house:

- Bosch is the only ADAS solution to strictly adhere to OEM specifications, guaranteeing factory tolerances and industry-best standards.
- Exclusive Bosch White Glove On-Site Setup and Installation – Contact your local Bosch rep for details
- FREE technical ADAS training videos covering ADAS features, components and systems overviews
- Equipped with top target boards and floor mats



Leak Testers

Safe and cost-effective leak detection solutions for passenger and heavy duty vehicles



BOSSMT 500 CALL

SMT 500

Low Pressure Leak Tester Smoke Machine

- On Board Air compressor eliminates need for shop air or inert gas tank during use
- Variable flow control detect leaks as small as 0.01" in sealed systems
- Pressure decay testing
- Compact, lightweight design (ultra-portable at 11 lbs)



BOSSMT 300 CALL

SMT 300

LeakTamer II EVAP & Diagnostic Smoke Machine

- Multi-purpose tester designed not only for EVAP testing but for leak detection in any low pressure closed system including oil leaks, exhaust leaks, wind leaks, water leaks, EGR leaks and many more
- Fully featured machine with graduated smoke flow control valve, air flow meter, and pressure/vacuum decay gauge
- Full complement of accessories and storage case included



BOS1699500000 CALL

HPT 500

High Pressure Leak Tester

- Produces leak detection "smoke" at higher pressure than standard machines (up to 20psi) for higher pressure systems
- Higher flow rate fills the system with smoke up to 5 times faster
- Ideal for finding leaks in exhaust after-treatment systems
- Test entire system, from intake to exhaust, in one 15 minute test
- High-pressure and large volume systems found in heavy-duty truck and turbocharged passenger vehicles



Scan the QR code to compare leak detection solutions from Bosch.

Prices are in Canadian dollars.

The Right Fit for Your Robinair: Genuine Parts & Accessories

Only authentic Robinair parts and accessories are engineered to deliver the precision, reliability, and longevity you expect from your equipment.



Keep your machine operating with genuine Robinair parts & accessories

1234yf Machine Service Kit

A complete maintenance kit for your Robinair 1234yf AC machine. Includes a refrigerant filter, replacement identifier sampler hose, vacuum pump oil, and replacement identifier filter. Helps ensure proper operation of your 1234yf machine.

- › 34724 refrigerant filter
- › 13119 vacuum pump oil
- › 16913 identifier filter
- › 16106 identifier sampler hose

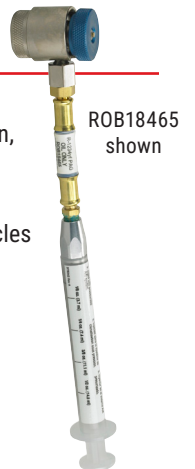


ROB16107 shown

New Syringe-Type Oil Injectors

YF machines do not have onboard oil injection, requiring a syringe to lubricate the system.

- › 18465 PAG labeled for gas/diesel vehicles
- › 18470 POE labeled for electric/hybrid vehicles



Genuine Robinair
Parts & Accessories

Genuine Robinair Parts & Accessories: Items have been tested and validated by our engineers. Buying genuine Robinair replacement parts, accessories, and maintenance items is the best way to ensure proper operation and service life of your RRR cart.

Prices are in Canadian dollars.

Money-making A/C carts



ROBAC1234-9 Connected

A/C system capacity databases

- Confirm AC system charge capacities directly from your Robinair card for R-134a and R-1234yf systems, sold separately
- Includes charge amounts and component oil capacities for vehicle model years 1999 – 2024 using R-134a refrigerant and vehicle model years 2013 – 2024 using 1234yf refrigerant
- Database helps ensure the vehicle system is charged with the correct amount of oil, per factory and OEM specification

ROB34001
\$395.95

R-134a database for 34998 machine

ROB34412-H
CALL

R-134a database for 34288NI, 34788NI, 34788NI-H, and 34988NI machines

R-1234yf database

ROB34002
\$395.95

R-1234yf database for AC1234-9 machine

ROB34413-F
CALL

R-1234yf database for AC1234-4 machine

ROB34414-D
CALL

R-1234yf database for AC1234-6 machine



SEE WHAT YOU MIGHT BE MISSING -
Calculate your return.
One service per day adds thousands in profit.

Find leaks and diagnose system issues faster

Connected accessories, leak detectors, refrigerant analyzers and tracer gas detectors for R-134a and R-1234yf service



ROB16995 CALL
R-ID Plus Refrigerant Identifier / Analyzer

- Analyze R-134a and R-1234yf refrigerant for purity and contamination
- Prevent contaminated refrigerant from being pulled into your machine
- Includes printer to add refrigerant purity to service report
- R-134a and R-1234yf tank adapter; R-134a and R-1234yf hoses included
- Available as 16990 R-ID without printer



ROBEVDC100 \$749.45
A/C Electronic Variable Displacement Compressor Tester

- Control signal to variable compressor to accurately diagnose system problems
- Quickly diagnose and verify valve function, lowering total repair time and costs
- Includes connect adapters for both old and newer style compressors
- Heavy duty battery clips and cable provides power from vehicle battery, eliminating the need for batteries
- Made in the USA



ROBLD7 \$806.45
Premium Refrigerant Leak Detector

- Detects R-1234yf and R-134a leaks for use on most vehicles
- Sweep, bar graph and line graph modes make finding leaks faster, easier
- Features audible detection alert, UV LED lights for use with UV dye and inspection light
- Sensor life up to 10 years for reliable leak detection
- Available as LD3 and LD5 versions



ROBLD9-TGKIT CALL
Tracer Gas Leak Detector Service Kit

- Test systems for leaks under pressure, instead of vacuum
- YF systems can hide leaks under vacuum, requiring pressure testing
- 95% Nitrogen / 5% hydrogen tracer gas mix helps find leaks faster
- Kit includes 1234yf coupler, 134a coupler, Tracer gas detector, hose and Tracer gas regulator
- Available as LD9-TG, Tracer gas detector only

Prices are in Canadian dollars.

Combining Simple Operation with Superior Accuracy

These machines will test, recover and recharge R-134a and R-1234yf automotive A/C system quickly and accurately.

R-134a Systems



R-1234yf Systems



Features	CALL ROB34288NI	CALL ROB34788NI	CALL ROB34788NI-H	CALL ROB34998	CALL ROBAC1234-4	CALL ROBAC1234-4SL	CALL ROBAC1234-9
Meets 1234yf standards for Off-highway, Agricultural, Trucking industries.	-	-	-	-	✓	✓	✓
Fully Automatic Function: Program to recover, vacuum, leak test and charge without operating panel valves.	Manual Valves	✓	✓	✓	✓	✓	✓
Automatic fluid drain/inject	Oil drain	Oil drain/inject*	Oil drain	Oil drain/inject, dye inject**	Oil drain	Oil drain	Oil drain
A/C System Flush: Flushes a vehicle's A/C system with refrigerant, eliminating any residual oil or other liquid. (Flushing adapters not included)	-	-	✓	✓	✓	✓	✓
Save & print before and after service data: Allows the user to store before and after service information by vehicle and print this information to provide to a customer.	-	✓	✓	✓	✓	✓	✓
Visual & Audible Alarm: Notifies the user when service is complete, or if a problem has occurred.	-	✓	✓	✓	✓	✓	✓
Vacuum Leak Test: Monitors level after evacuation, informs of possible leak.	-	✓	✓	✓	✓	✓	✓
Automatic Air Purge: Eliminates system-damaging air without monitoring gauges or opening valves.	✓	✓	✓	✓	✓	✓	✓
Automatic Refrigerant Refill: Maintains a user-selectable amount of refrigerant in an internal vessel and signals when it's time to change supply tank.	-	✓	✓	✓	✓	✓	✓
Vacuum Feature: Defaults to 15 mins, programmable up to 99 mins. "Remaining time" is displayed.	✓	✓	✓	✓	✓	✓	✓
Multilingual display	4.3" color LCD	4.3" color LCD	4.3" color LCD	10.5" hi-res touch screen	4.3" color LCD	4.3" color LCD	10.5" hi-res touch screen
Refrigerant Charging:	Low only	High, low or both	High, low or both	High, low or both	High, low or both	High, low or both	High, low or both
Refrigerant Management System: Displays refrigerant use and monitors remaining filter life. Prompts appear when 1/3 of filter life remains.	✓	✓	✓	✓	✓	✓	✓
Electric Vehicle: Capable of servicing high voltage electric compressor A/C systems.	-	-	✓	-	✓	✓	✓
Printer	30038	30038	30038	Mopria Print Service wireless printing	30038	30038	Mopria Print Service wireless printing

* One oil bottle. ** Two oil bottles and one UV dye bottle. ***ACS-250 requires purchase of 34001 or 34002 database to read YMME and display refrigerant capacity

All machines use 34724 filter and 13172 maintenance kit

Syringe-type Injectors



ROB18480



ROB18470

R-134a Oil Injectors

ROB18480 \$215.95

PAG labeled for gasoline and diesel vehicles

ROB18490 \$215.95

POE labeled for hybrid and electric vehicles

R1234yf Oil Injectors

ROB18470 \$287.45

POE-labeled 1234yf injector for electric and hybrid vehicles

ROB18465 \$287.45

PAG-labeled 1234yf injector for low-voltage systems in gas and diesel vehicles

Refrigerant Recovery

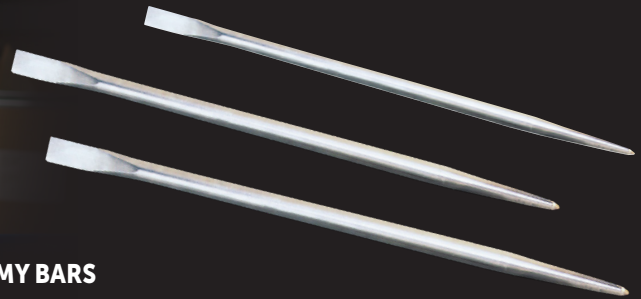
ROB25700 CALL Contaminated Refrigerant Recovery Machine

The Robinair 25700 is a contaminated recovery only device that is designed to remove contaminated refrigerant from vehicles that are equipped with R-1234yf and R-134a A/C systems.



ROB17990 \$623.95 Contaminated Refrigerant Tank Assembly

OTC JIMMY BARS & ARM PRYING TOOL FOR LEVERAGE & CONTROL



NEW ★



OTC6007 \$40.95
LOWER CONTROL ARM PRYING TOOL

Installing a ball joint on a lower control arm typically requires the effort of two people. However, with this tool and our No. 7420 or 7421 pry bar - or any 7/8" diameter pry bar - it's a one-person job.

JIMMY BARS

Jimmy Bars are forged from chrome alloy steel and heat treated to resist bending and breaking.

OTC7166 \$54.95
5/8" round, 18" long

OTC7167 \$59.45
3/4" round, 24" long

OTC7168 \$66.95
7/8" round, 30" long

OTC7420 \$166.95
7/8" round, 46" long

OTC7421A \$245.95
1" round, 54" long



Scan the QR code to watch how OTC Jimmy Bars & Control Arm Prying Tool help to beat the flat rate.



OTC1750 CALL
6,000 lb. Engine Stand

- Revolver diesel engine stand without universal engine adapter assembly
- 96:1 ratio worm gear set rotates components 360*, handle locks in any position
- Integrated 12-ton jack raises and lowers smoothly to position work
- Large front wheels and rear casters for mobility, positioning



OTC4324 CALL
1,100-LB Capacity Engine Support Bar

- Universal design supports engine/transaxle during service
- Includes two 36" chain assemblies, rubberized legs to protect vehicle



OTC1726A CALL
1,000 LB. Capacity Engine Stand

- A timesaver for passenger car and light truck engine rebuilding or repair.
- Four adjustable attachment arms make engine mounting fast and easy.
- Engine can be rotated a full 360° with a turn of the handle; a locking pin secures the work in any of eight positions.
- Two rear wheels lock tightly to anchor the stand in place. Easy one-bolt disassembly for transport of stand.

Prices are in Canadian dollars.

NEW! From OTC



OTC4240A CALL 30-Ton King Pin Pusher Set

- The Heavy Duty Kingpin and Brake Anchor Pin Pusher utilizes its cylinder and hydraulic force to replace traditional time-consuming torch and hammer methods.
- It helps get the job done in minutes instead of the better part of a day.
- Five special collars and two pins allow this unit to work on both straight and tapered kingpins.
- It accommodates sizes from 7/8" to 2" in diameter and up to 11-1/4" in length. With 30 tons of force, it can push out even the most corroded kingpins.
- The anchor pin can be removed quickly by using the special adapter installed in the pusher's base block and the unit positioned over the brake's spider.
- Included are the 4121A-MA hydraulic cylinder and 4012A Two-Speed Hand Pump that make the job easy.



OTC4247 CALL Hendrickson Suspension Bushing Master Kit with Pump

- This all-new rear suspension bushing tool for Heavy Duty vehicles makes Pivot and D-pin bushing removal and installation easier tasks.
- Because the patented design allows the tool to be mounted to the suspension piece, the weight of the tool does not need to be held in place during operation.
- It also includes centering adapters that align the tool and reduce the likelihood of bushing damage or improper installation.
- With the included OTC 4106A 25-ton cylinder, even bushings covered in road dirt and salt are easy to replace.

Prices are in Canadian dollars.



OTC4247-FR CALL Suspension Bushing Kit with Pump

- This heavy-duty suspension bushing tool replaces worn-out, rusted, and frozen double-wrap spring bushings faster and easier without heat or damage by providing a 25-ton capacity.
- The tool can be assembled on the spring and bushing without removing the assembly from the vehicle, dramatically reducing service time and not requiring the use of a shop press.
- Patent-pending design allows for unassisted assembly of the tool onto the spring, eliminating the need to hold any weight of the tool during operation.
- The press plates and adapters are easily installed which perfectly align the bushing to reduce the chance of misalignment and bushing damage during removal or installation.



OTC5085 \$354.95 Hub Oil Seal Remover

- Eliminates bearing and hub damage that can occur when a punch and hammer is used to remove the seal.
- Extra long 28" handle provides leverage, unique pulling head design quickly and easily removes the seal in one piece.
- Built from the highest quality heat-treated steel.
- Removes hub seals on trailer and truck axles, including truck steering axles.



OTC5081 \$144.45 S-Cam Air Brake Spring Tool

- Safely replace brake shoes on heavy-duty tractors and trailers.
- Simply hook the retaining spring loop and press down against the axle.



OTC5900A-PLUS \$203.95 Master Torx Bit Socket Set, 53pc.

- Updated 53-piece Master Torx Bit Socket Set plus special 24mm External Torx PLUS Socket (p/n 5932-24) required for Ford Super Duty pick-up beds starting model year 2017.
- Socket kit includes various sizes of Torx, Torx PLUS, Tamper Resistant Torx, Bit Sockets and External Torx Sockets in 1/4", 3/8" and 1/2" square drive.
- Stored in a convenient hard plastic clamshell case for protection and organization. Not rated for use with impact tools.



OTC600053 \$300.45 Large Hub Seal Puller Head

- A larger size replaceable head for hub oil seal removal on seals with 4-5/8" I.D. and larger. The head screws onto handle of the existing 5085 hub seal puller, for more applications and leverage.
- Eliminates bearing and hub damage that can occur when a punch and hammer is used to remove the seal. Fits on extra long 28" handle of 5085 (not included) to provide leverage, the unique pulling head design quickly and easily removes the seal in one piece. Built from the highest quality heat-treated steel. Removes hub seals on trailer and truck axles, including truck steering axles.
- Original 5085 puller head is 4.6" long, fitting seals up to 4-1/2" I.D.
- New head is 5.1" long, making it easier to pull larger seals.



OTCCA7149 CALL Ball Joint Connected Adapter Starter Kit

- A new solution, building on the legendary OTC 7249 C-frame ball joint kit.
- This extra-large C-frame uses stainless steel ball bearings to securely hold cups and adapters, making it easier to setup your press to remove and install ball joints, U-joints, wheel studs and more.
- The starter kit includes 7 cups and adapters for more than 230 vehicle applications, 38% more vehicle models than competitive C-frame kits.
- Fully compatible with existing OTC ball joint kits, expand your vehicle applications and make R&I of ball joints and suspension components faster and easier.



OTC5961 \$66.45
Drain Plug PRO Tool Kit

- Includes attachments for standard drain plugs, low profile drain plugs, internal hex drain plugs (17mm) and 1/4" hex bits
- Use with any 1/4" square drive socket in your tool box
- Safely remove oil pan drain plugs avoiding contact with hot oil and prevent dropping drain plugs and other fasteners
- The flexible shank with 1/4" square drive helps remove or thread smaller fasteners even in hard to reach places



OTC5961HD \$51.95
Heavy-Duty Drain Plug PRO Tool Kit

- Includes large attachments for large commercial vehicle drain plugs and 1/2" square drive differential plug
- Use with any 3/8" square drive socket in your tool box. Safely remove Heavy Duty oil pan drain plugs avoiding contact with hot oil and prevent dropping drain plugs and other fasteners.
- The flexible shank with 3/8" square drive helps remove or thread smaller fasteners even in hard to reach places



OTCCA6630 CALL
Ball Joint Connected Adapter Professional Kit

- Patented connection and adapter design uses spring-loaded stainless steel ball bearings to securely attach all cups and adapters to the C-frame
- 25 cups and adapters work on over 600 vehicle models
- Works with most OTC ball joint kits, cups and adapters
- Locking cups and adapters set up faster on the vehicle and leave one hand free
- No O-rings or fasteners to lose, damage, or replace
- For R&L of ball joints, U-joints, wheel studs and more



OTC6575 CALL
OTC Hub Grappler

- Complete solution for servicing wheel hubs and bearings
- Specifically designed to apply maximum force with minimal effort
- Jaws designed and sized to fit hub applications and quickly located on the puller bar without using fasteners.



OTC8203L \$496.95
3-Piece Long Handled Pry Bar Set

- A set of 3 made-in-the-USA pry bars with comfortable, sturdy rubberized grips.
- Set includes 24", 36" and 48" lengths for general every day to heavy-duty use.
- Each bar is drop-forged in Minnesota with a hand-ground chisel end for wedging into tight spaces.
- Special tempered steel provides extra strength, durability and leverage for tough jobs.
- A dedicated striking cap provides a big target to drive the pry bar in to help separate components faster.



OTC4440 \$134.95
Heavy Duty 3 Leg Filter Wrench Standard

- Self gripping design for true universal fit from 3" to 4-3/4".
- Heavy duty knurled leg design for extra grip and strength. 1/2" square drive with 21mm hex option.



OTC4441 \$187.45
Heavy Duty 3 Leg Filter Wrench Large

- Self gripping design for true universal fit from 4" to 6 1/2".
- Heavy duty knurled leg design for extra grip and strength. 1/2" square drive.



OTC4512 \$179.45
Snap Ring Pliers Set - Internal / External

- For internal or external snap rings; thumbscrew permits quick conversion
- Made of heavy-gauge tempered steel
- Also includes two stainless steel handled picks



OTC7177 \$332.95
Heavy Duty Extendable Indexing Pry Bar

- The combination extendable reach and pivoting head permits access to many jobs where traditional pry bars may be limited.
- 13/16" prying head extends from 34" to 53" using 31 preset positions set in 5/8" increments.
- Extension and indexing adjustments are done with separate oversized pins allowing length and angle adjustments to be made quickly.
- Optimal loading of 1500 lbs. to 2200 lbs. is made possible by the bar's heavy duty 13/16" steel bar and 1-3/8" tubular extension. Knurling has been added at the base of the handle for a strong, secure grip.



OTC60796A \$261.95
Drip Tray for 1726 and 1735 Engine Stands

- Made of tough, automotive-grade ABS thermoplastic polymer, the pan is impact and heat-resistant, able to handle fluids directly from a hot engine.
- A molded pour spout channels fluids for no-mess emptying into a proper disposal container, and stepped interior channels help catch larger solids to avoid clogging pumps and screen filters.
- Drip pan has unique stepped channel to fit directly over the crossmember of both the 1726 and 1735 series stands. Engine stand not included.



OTC5605 \$217.95
Deluxe Compression Tester Kit

- Comprehensive analog kit for gasoline engines.
- Includes specialized Ford Triton 16mm adapter.
- Long 26" flex hose for easy access.
- Durable 2.5" dual-scale gauge (0-300 psi / 0-2100 kPa).



OTC5605-DG \$322.95
Deluxe Digital Compression Tester Kit

- Advanced digital compression testing for gasoline engines.
- Records and plays back readings for up to 12 cylinders.
- Includes specialized Ford Triton 16mm adapter.
- Backlit LCD displays PSI, kPa, bar, kg/c.



OTC5606 \$155.95
Compression Tester Kit

- Standard analog kit for general gasoline engine testing.
- Versatile adapter set (10mm, 12mm, 14mm, 18mm threads).
- Long 26" flex hose for easy viewing in tight spaces.
- Professional 2.5" dual-scale gauge (0-300 psi / 0-2100 kPa).



OTC5606-DG \$295.95
Digital Compression Tester Kit

- Advanced digital compression testing for general gasoline engines.
- Records and plays back readings for up to 12 cylinders.
- Versatile adapter set (10mm, 12mm, 14mm, 18mm threads).
- Backlit LCD displays PSI, kPa, bar, kg/c.

Prices are in Canadian dollars.



OTC5606-DGH \$165.95
Digital Compression Gauge Head and Boot

- The OTC 5606-DGH digital compression gauge head can replace analog gauges to provide advanced features, including measure, record and playback of compression readings on up to 12 cylinders, for quicker testing and diagnosis.
- The gauge head can directly replace any 2-1/2" analog gauge with a 1/4" NPT male thread.
- Upgrades current compression gauge with exact, numeric measurements.
- The digital gauge is easy to read and can display pressures in PSI, kPA, bar and kg/c.
- A convenient push-button side release valve relieves pressure for repeat testing.



OTC6596 \$61.95
Brake Pad Gauge

- Speed up the inspection process.
- Allows for a definitive measurement of brake pads to determine remaining life.
- Unique design allows for measurement on the vehicle without the removal of any components in most cases (wheel assembly or brake caliper).
- Quick reference color code scale for brake pad condition.
- Attain measurement without removing vehicle parts.



OTC5950A \$72.95
CRIMPRO 4-in-1 Angled Wire Tool

- The angled feature allows access to close quarters and facilitates superior crimps.
- Compact 7-inch design used 4 ways.
- Gripping nose - to pull, twist, bend, and shape.
- Crimper - crimps 12-20 AWG insulated and non-insulated wire.
- Stripper - strips 12-20 AWG wire.
- Cutter - ability to make cuts below pivot.



OTC5950K \$124.45
CRIMPRO 4-in-1 Wire Service Set

- CrimPro, 4-in-1 Wire Service Set includes both the 5950S CrimPro, 4-in-1 Wire Tool and 5950A CrimPro, 4-in-1 Angled Wire Tool.
- Compact 7-inch design used 4 ways.
- Gripping nose - to pull, twist, bend, and shape.
- Crimper - crimps 12-20 AWG insulated and non-insulated wire.
- Stripper - strips 12-20 AWG wire.
- Cutter - ability to make cuts below pivot.



OTC8260M \$339.95
Pick/Hook & Hose Removal Set

- Ergonomic handle design fits properly in the hand, allowing for easier holding of the tool.
- Hose removal tools can also be used on upper and lower radiator hoses, clips, washers, gaskets and other items.
- Short and Long picks are multi-use tools to scribe, align pierce, clean or remove o-rings, shaft seals, cv boot and motorcycle fork seals and dust hoods.
- Stainless steel shafts and tips, with assorted tip shapes designed for marking, removing o-rings, accessing snap rings and other assorted applications.
- Includes a knurled shaft which allows good grip with grease or oil on hands.



OTC4781 \$19.45
Super Stubby Screwdriver Set

- These screwdrivers are perfect for those limited access fasteners typically found on carburetors, in electrical compartments and many other areas.
- 2 Phillips and 2 straight screwdrivers included in set.



OTC4783 \$36.45
Flexible Magnetic/Claw Pick Up Tool

- The 25" flexible spring shaft allows the tool to reach difficult areas and pick up objects either magnetically or with the use of the retractable claw.



OTC4490 \$41.45
Magnetic Parts Tray

- Rectangular, stainless steel tray is 9-1/2" x 5-1/2" and 1-1/4" deep.
- Holds tools and small metal parts so they don't get lost or misplaced during repair work.
- Two heavy-duty magnets on bottom of tray have non-marring contact pads; will securely hold tray to metal objects such as a tool box, air cleaner cover, frame rail, fender, etc.



OTC4515 \$25.45
Mini Pick & Hook Set - 4 Piece

- Sturdy stainless steel points and shafts designed for marking, removing o-rings, accessing snap rings, and performing other tasks.
- Assorted angle tips allow you to reach awkward locations.
- Knurled shaft design enhances finger control for delicate jobs.



OTC7402 \$192.45
Universal Outside Thread Chaser

- Quickly restore threads to near new condition without expensive thread cutting equipment.
- Replaceable V-Pads and dies.

Prices are in Canadian dollars.



OTC6637-ST CALL
Strut Tamer II with Stand

- New Standard in Strength and Safety: Meets the ASME PASE safety standards for spring compressors.
- Capable of safely compressing the largest strut springs.
- Extra-thick 5/8" steel arms for superior strength, stability, and safety
- It replaces the Strut Tamer Extreme with enhancements for quicker and safer strut service.
- Market-Leading Compression Force: Features the strongest compression force available, up to 4,000 pounds, suitable for large truck, SUV, and passenger car shock/strut assemblies.



OTC5078 CALL
2,000 lb. Capacity High-Lift Transmission Jack for Trucks and Buses

- Low height of 41-1/2" allows transmission to be rolled out from under vehicle's frame. €C Foot-operated air pump enables the operator to effortlessly raise the transmission into place. €C Rugged heavy wall tubing and oversized base for stability. €C A dedicated adapter for Allison 500 and 600 series automatic transmission is included.
- Ideal size for step vans, bucket trucks and smaller work vehicles.



OTC1545A \$668.45
1,500-lb Capacity Motorcycle Lift

- 17" long skids for lifting large, wide cruisers.
- Lifting range 3-1/2" to 16-3/4".
- Removable handle for 360° access to load.
- Foot pedal release, Locking rear casters, Automatic safety lock for safe, secure and easy lifting
- Includes Two ratcheting tie-down straps for safety
- Limited lifetime warranty, meets newest ASME PASE standards

Prices are in Canadian dollars.



OTC1735B CALL
2,000 lb. Capacity Heavy-Duty Motor-Rotor Repair Stand

- Handles a wide variety of engines, transmissions, torque converters, and rear axles from trucks, tractors, and construction machinery.
- The 50:1 ratio gearbox allows full rotation of mounted unit with just a turn of the crank and locks in position. Easily maneuvered when loaded.
- To ensure engine stability in all positions, this repair stand is equipped with a positive-crank handle locking mechanism.
- Twin-post design, featuring laterally adjustable, 3-position outboard support; provides an extremely stable work-holding unit.
- Locking rear wheels anchor stand in position.
- Includes 538578 universal arm assembly, quantity 4.



OTC1819 CALL
2,200-LB Capacity Floor Crane

- 2-Speed hydraulic pump easily lifts up to 2,200 lbs for engine, axle, powertrain and other service
- Telescoping boom, adjustable leg spread enable service on more vehicles and applications



OTCPJH15 \$463.45
1,500-lb Capacity Hydraulic Car Dolly

- Hydraulic cylinder for less effort, faster lifting
- Fits tires up to 12" wide



OTCPJM15 \$332.95
1,500-lb Capacity Hydraulic Car Dolly

- Ratcheting design with built-in safety catch
- Fits tires up to 13" wide



OTCPJ15-RACK \$183.95

Car Dolly

- Holds up to 4 vehicle dollies
- 5" swivel casters for easy maneuvering around shop



OTCS03G \$439.95
3-Ton Geared Jack Stand (Pair)

OTCS06G \$601.95

6-Ton Geared Jack Stand (Pair)

- The handle features three individual locking sections, extending range 19" to 50" in length to reach under lifted vehicles for safe placement and support of the geared jack stand.
- Unique head shape turns the gearbox, easily lifting the jack stand support arm without crawling underneath a vehicle.
- Self-locking geared ratchet handle cannot be released under load and feature a wide range of locking heights and adjusting positions to provide a universal stand for most vehicles.
- The form-fit saddle design and wide base ensures stability. A durable baked enamel finish resists corrosion, and welded foot pads resist sinking into soft ground or asphalt.
- Ideal size for holding utility vans, full size sedans, full size pickups and SUVs and other personal passenger vehicles.



OTC5019A CALL
2,200 lb. Capacity Low-Lift Transmission Jack

- The 8-1/4" low height is perfect for aerodynamic trucks with low ground clearance. Special mounting adapter (No. 540231) fits popular Eaton® Fuller® RoadRanger® transmissions used on nearly all Class 7 and 8 heavy-duty trucks.
- Mounting plate angle is adjusted with the turn of a wrench. Degree of tilt: 20° back, 15° forward, 12° side to side. Swiveling pump handle permits ease of operation in restricted working spaces. Fast-acting pump quickly raises lifting arm.



OTC1522A CALL
2,000 LB LOW LIFT TRANSMISSION JACK

- Rugged, stable unit is ideal for handling heavy transmissions. Includes adapter plate for Eaton Fuller Road Ranger transmissions.
- Low profile design gets under the lowest clearance trucks, making it ideal for clutch repair work.
- Pump handle rotates 360 degrees for operator convenience.
- Safety overload prevents use beyond its rated capacity.
- Height range 6-7/8 in. to 35-1/4 in. and larger vehicles.



OTCPG55

OTCPG25 CALL
OTCPG55 CALL
OTCPG100 CALL
Press Guard for Shop Presses

- The OTC Press Guard is a unique, patent-pending angular design to protect the user in the event that the pressing operation produces flying debris.
- This allows for maximum space for workpieces and components with the guard latched closed, vs traditional flat designs.
- The universal hinge mounts to multiple frame sizes and does not require any drilling or other modifications to the press frame for mounting, preserving press strength and integrity.



OTC1825 CALL
17-1/2 Ton Capacity Heavy-Duty "Open Throat" Press

- Ram head moves side to side for off-center pressing; ram-to-work distance is adjusted by forcing screw that is extended or retracted by speed crank.
- "Open-throat" frame extensions make handling of bulky jobs possible outside of the press frame.



OTC1826A CALL
25-Ton Capacity Heavy-Duty "Open Throat" Press

- "Open throat" feature enables ram to be positioned outside of press frame for fast axle bearing removal and installation, as well as other tasks.
- Press bed is raised or lowered with a hand crank, and a spring-return hydraulic ram is laterally adjustable for off-center work at full capacity.



OTC1872 CALL
55 TON HEAVY DUTY SHOP PRESS W/ELECT.

- 55-ton press. Includes double-acting ram No. 51682 with 13" stroke;
- No. 4046 electric/hydraulic pump; No. 9651 gauge; No. 36887 hoses; and pump
- mounting bracket. Side-to-side positioning of ram allows full capacity pressing along entire bolster length without buckling or bending.
- Hydraulic ram features 13" of stroke. Choice of hydraulic power units.



OTC1858

OTC1858 CALL
OTC1858P CALL
100-ton Capacity Heavy-Duty Shop Press

- Wide open uprights allow easy positioning of bars and shafts for straightening or bending.
- Upper bolster can be lowered for convenient positioning during repetitive jobs.
- Ram head glides smoothly on rollers for easy horizontal adjustments; rugged press frame will withstand a full capacity load with the ram head in any position across the upper bolster.
- 1858P includes 2-stage hydraulic pump..



OTCHDJ5 CALL
5-Ton Service Jack

- Lock and release controls are located on top of 40" spring-loaded handle.
- Handle locks into any position from vertical to horizontal.
- Ideal size for step vans, bucket trucks and smaller work vehicles.



OTCHDJ5P CALL
5-Ton Air / Hydraulic Service Jack

- Bearing-mounted rear swivel casters and front wheels with roller bearings makes maneuvering easy.
- Spring-loaded handle locks in three positions.
- Ideal size for lifting step vans, bucket trucks, and smaller vehicles.

Check BoschRebates.com for end-user rebates on select OTC equipment.



OTCHDJ10 CALL
10-Ton Service Jack

- Lock and release control are located on top of the handle.
- Spring-loaded 43-1/4" handle locks into any position from vertical to horizontal.
- Ideal size for vocational vehicles, bucket trucks, school buses and larger vehicles.



OTCHDJ10P CALL
10-Ton Air / Hydraulic Service Jack

- Spring-loaded handle locks in three positions.
- A foot pedal quickly positions the saddle to the lift point.
- Connects to shop air supply.
- Ideal size for vocational vehicles, bucket trucks, school buses, and larger vehicles.



OTCHDJ20 CALL
20-Ton Service Jack

- Low-profile stance and extended height to add versatility.
- Large metal wheels and swivel casters roll effortlessly on internal bearings.
- Foot pedal for quick no load approach.
- Ideal size for heavy duty vehicles, construction, fleet, agricultural equipment, mass transit buses, and loaded vocational vehicles.



OTCHDJ20P CALL
20-Ton Air / Hydraulic Service Jack

- Low-profile stance and extended height add to versatility.
- Huge metal wheels and swivel casters roll effortlessly on internal bearings.
- Air-assist, foot or handle pump action.
- Ideal size for safely lifting bucket trucks, school buses, city buses, and garbage trucks.

Prices are in Canadian dollars.



OTCSA02 \$272.45
2-Ton Aluminum Jack Stands (Pair)

- Lightweight 2-ton jack stands made from rugged aircraft aluminum for durability and long service life.
- Pin-style adjustment with 6 heights for various service needs.
- A 7-inch flat, circular base provides stability when holding vehicles and a 2-inch saddle holds vehicle frame or undercarriage firmly in place for inspection or repair.
- Ideal size for holding compact and midsize sedans and small SUVs.



OTCS020 \$769.95
20-Ton Jack Stand

- Designed for lengthy support needs.
- Square steel tubing base and support column.
- Large saddle that when adjusted for height is secured in place with a dual pin permanently tethered to the stand.
- Durable steel legs are welded to the base making a stable foundation for sustaining load.



OTCS03 \$179.45
3-Ton Jack Stands (Pair)

- Self-locking ratchet handle cannot be released under load and feature a wide range of locking heights and adjusting positions to provide a universal stand for most vehicles.
- Ideal size for holding utility vans, full size sedans, full size pickups and SUVs and other personal passenger vehicles.



OTCS022 \$618.95
22-Ton Jack Stands (Pair)

- 11" flat square base welded to a square tube and steel support column.
- Rated to safely hold 44,000 lbs.
- The flat base resists sinking into concrete, asphalt and other soft surfaces.
- A single pin-style adjustment holds the support column in place with three height adjustment positions.
- A braided steel cable secures the extra-large pin to the jack, preventing it from being lost or misplaced.



OTCS04 \$267.45
4-Ton Jack Stands (Pair)

- Self-locking ratchet handle cannot be released under load and feature a wide range of locking heights and adjusting positions to provide a universal stand for most vehicles.
- Ideal size for holding full-size pickups, SUVs and loaded tradesmen vehicles.



OTC1778B CALL
12-Ton Capacity Low Profile Jack Stand, Single

- Spun steel base for greater ground contact, won't dig into asphalt or soft surfaces
- 19" To 29-1/2" holding range



OTCS06 \$309.95
6-Ton Jack Stands (Pair)

- Self-locking ratchet handle cannot be released under load and feature a wide range of locking heights and adjusting positions to provide a universal stand for most vehicles.
- The form-fit saddle design and wide base ensures stability.
- Ideal size for holding step vans, vocational trucks and smaller heavy duty vehicles even when loaded.

Prices are in Canadian dollars.

OTC HAS BEEN INVENTING, MANUFACTURING AND PERFECTING AUTOMOTIVE SPECIALTY TOOLS AND EQUIPMENT FOR OVER 100 YEARS.

DISCOVER THE TOP TOOLS TECHNICIANS NEED IN THE VIDEO SERIES BELOW.



Scan the QR code to find the video playlist.



Turning Training into Expertise

Equipping technicians with skills to diagnose, service, and repair the advanced vehicles of today and tomorrow.

Training Contact Information:

boschtraining@us.bosch.com

2026 Q3 Webcast Classes

Date	Course
July 7th	Introduction to Hybrid Electric Vehicles
July 8th	Introduction to Battery Electric Vehicles
July 14th	Similarities and Differences of CRD and GDI Systems – Air Induction, Part 1 of 4
July 15th	Similarities and Differences of CRD and GDI Systems – Air System Components, Part 2 of 4
July 29th	The Basics of Oxygen Sensor Diagnostics
August 25th	Similarities and Differences of CRD and GDI Systems – Fuel Systems, Part 3 of 4
August 26th	Similarities and Differences of CRD and GDI Systems – After Treatment, Part 4 of 4
August 26th	ADAS Part 1 of 4 – Introduction
August 27th	ADAS Part 2 of 4 – Features
August 28th	The Essentials of common Rail Diesel (CRD)
September 29th	EV/Hybrid Phase 1 – Safety Precautions for High Voltage Vehicles
September 30th	The Essentials of Gasoline Direct Injection (GDI)

Two sessions daily:

10-11 am (EST)
and
2-3 pm (EST)



Scan the QR code for more details.

Instructed by Bosch Sr. Technical Trainer

Karl Schneider



Registration now open!



Scan the QR code for more details.

ADAS in Action: Hands-On Training

Month	Date	Location
February	25th	Santa Ana, CA
March	19th	Plymouth, MI
June	4th	Santa Ana, CA
	6th	San Jose, CA
September	24th	Santa Ana, CA
	26th	San Jose, CA
October	6th	Plymouth, MI

Everything from a single source.



Scan the QR code for more details.

Committed to quality because your reputation depends on it.

Meet the family
boschdiagnostics.com/about-us



Bosch Customer Service

800 321-4889
(Ext. 4, Option 2)

OTC and Robinair Customer Service

800 533-6127
(Option 1)

25121757 Q2 2026 Muscle Tools edition